

# Article title should be here, title in English if paper in English, title in French if paper in French

Rakoto Rakotoarison<sup>1\*</sup>, Marcel Dupont<sup>2</sup>, Sandokan of Mompracem<sup>1,2</sup>

## Abstract

The abstract should be here.

Abstract and keywords must be in English both in case the article is in French or in English.

Please use pdf<sub>latex</sub> command to compile the paper.

## Keywords

Oceanic Physics — Agriculture — Stochastic Processes

<sup>1</sup>Department of Sociology, University of Mikea Forest, Tulear, Madagascar

<sup>2</sup>Department of Linguistics, University of Foissgras, Paris, France

\*Corresponding author: rakoto@magmail.com

## Contents

<b>1</b>	<b>Introduction</b>	<b>1</b>
<b>2</b>	<b>Methods</b>	<b>1</b>
2.1	A list	1
2.2	Figures	1
<b>3</b>	<b>Results</b>	<b>2</b>
<b>4</b>	<b>Discussion</b>	<b>2</b>
	<b>References</b>	<b>2</b>

## 1. Introduction

Introduction can be here. The number of sections may be different and not necessarily the first section should be **Introduction**.

A reference can be quoted as [D'Urville, 1832]. See three more examples: [Vavilov, 1926], [Bakker *et al*, 2009] and [Jolliffe, 2002]. (references should be quoted by author names and not numbers). References should be listed according to the example below (title should appear as well initial and final page numbers).

## 2. Methods

Methods can be described here.

A formula can be inserted this way

$$D(i) = \frac{1}{N} \sum_{j \neq i} \frac{A(i, j)}{B + C \Delta(i, j)} \quad (1)$$

or in this way if numbering should be avoided

$$L = \lim_{g \rightarrow \infty} \frac{\sum_{i,j,k} \langle \sigma_i \sigma_j \sigma_k \rangle}{4 \cdot 3^g} = \frac{1}{2\beta} \left[ \frac{\partial \Phi}{\partial q} \right]_{h=q=0^+}$$

## 2.1 A list

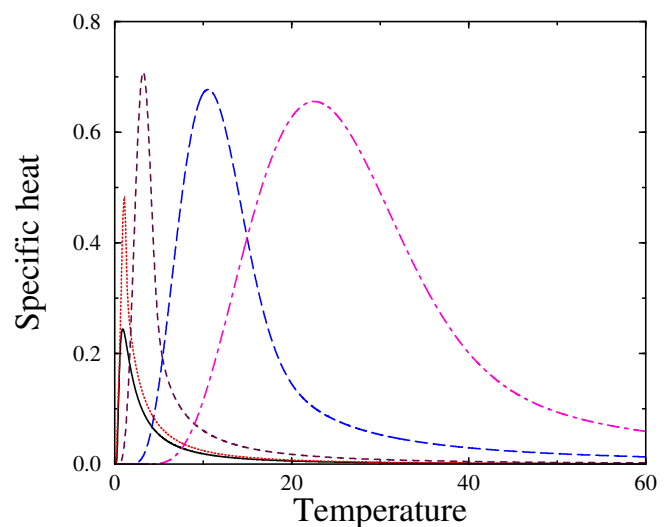
A list can be obtained as follows

- 1 Jump process:** Each individual moves (or stays) independently of the others.
- 2 Contamination process:** The process only occurs when individuals *A* and *B* are at the same site.
- 3 Recovery process:** Each individual *B* can be transformed into an individual *A* with a recovery rate  $k_2$ .

## 2.2 Figures

Figures may be in .eps, .pdf or .jpg formats.

A .pdf figure (Fig. 1) can be inserted as follows:



**Figure 1.** A .pdf figure

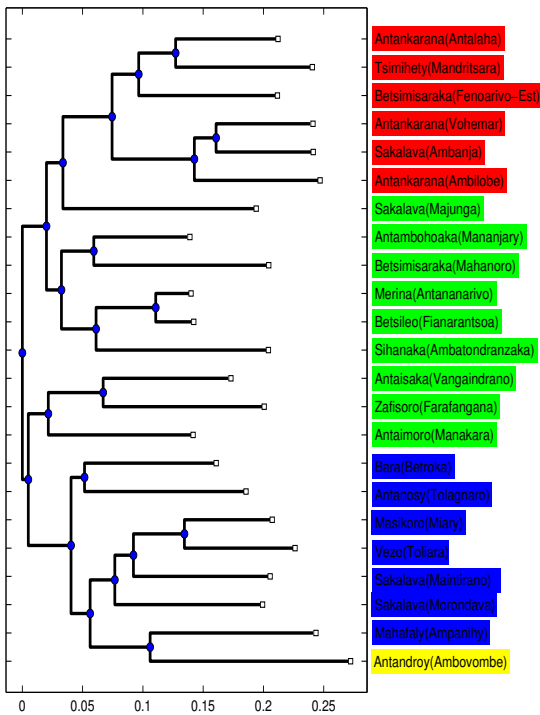
A large .jpg (Fig. 2) figure can be inserted as follows:



**Figure 2.** A large .jpg figure

Large figures can be also obtained using .eps and .pdf formats.

A .eps figure (Fig. 3) can be inserted as follows:



**Figure 3.** A .eps figure.

Notice that pdflatex compiler creates tree-eps-converted-to.pdf from tree.pdf.

There are other ways to include figures, but take care to use only .eps, .pdf or .jpg formats.

### 3. Results

Results can be put here.

A table can be inserted according to

$\mu$	$\rho_c$	$\beta/v$	$1/z$
1.1	2.72(1)	0.72(2)	2.7(2)
1.5	2.88(1)	0.64(3)	2.5(3)
2.0	3.17(1)	0.53(4)	1.4(9)
3.0	3.93(1)	0.32(2)	0.63(8)
4.0	4.38(2)	0.34(4)	0.48(2)

### 4. Discussion

Discussion and conclusions can be here. The final section may have another name.

### Acknowledgments

Misoatra tompoko daholy which means thanks everybody.

### References

- [D'Urville, 1832] D. D'Urville, *Sur les îles du Grand Océan*, Bulletin de la Société de Géographie **17**, 1-21 (1832).
- [Vavilov, 1926] N. I. Vavilov, *Centers of origin of cultivated plants*. Trudi po Prikl. Bot. Genet. Selekt. [Bulletin of Applied Botany and Genetics] **16** 139-248, (1926).
- [Bakker et al, 2009] D. Bakker, A. Müller, V. Vellupillai, S. Wichmann, C. H. Brown, P. Brown, D. Egerov, R. Mailhammer, A. Grant and E. W. Holman, *Adding typology to lexicostatistics: a combined approach to language classification*. Linguistic Typology **13**, 167-179 (2009).
- [Jolliffe, 2002] I. T. Jolliffe, *Principal Component Analysis*. Springer Series in Statistics **XXIX**, 2nd ed. (2002), Springer, NY.